

# State of Wyoming Corner Record

(In compliance with the CORNER PERPETUATION AND FILING ACT, Wyoming Statutes, 1997 Section 33-29-140 et. seq., and the Rules and Regulations of the Board of Professional Engineers and Professional Land Surveyors)

Reverse side of this form may be used if more space is needed.

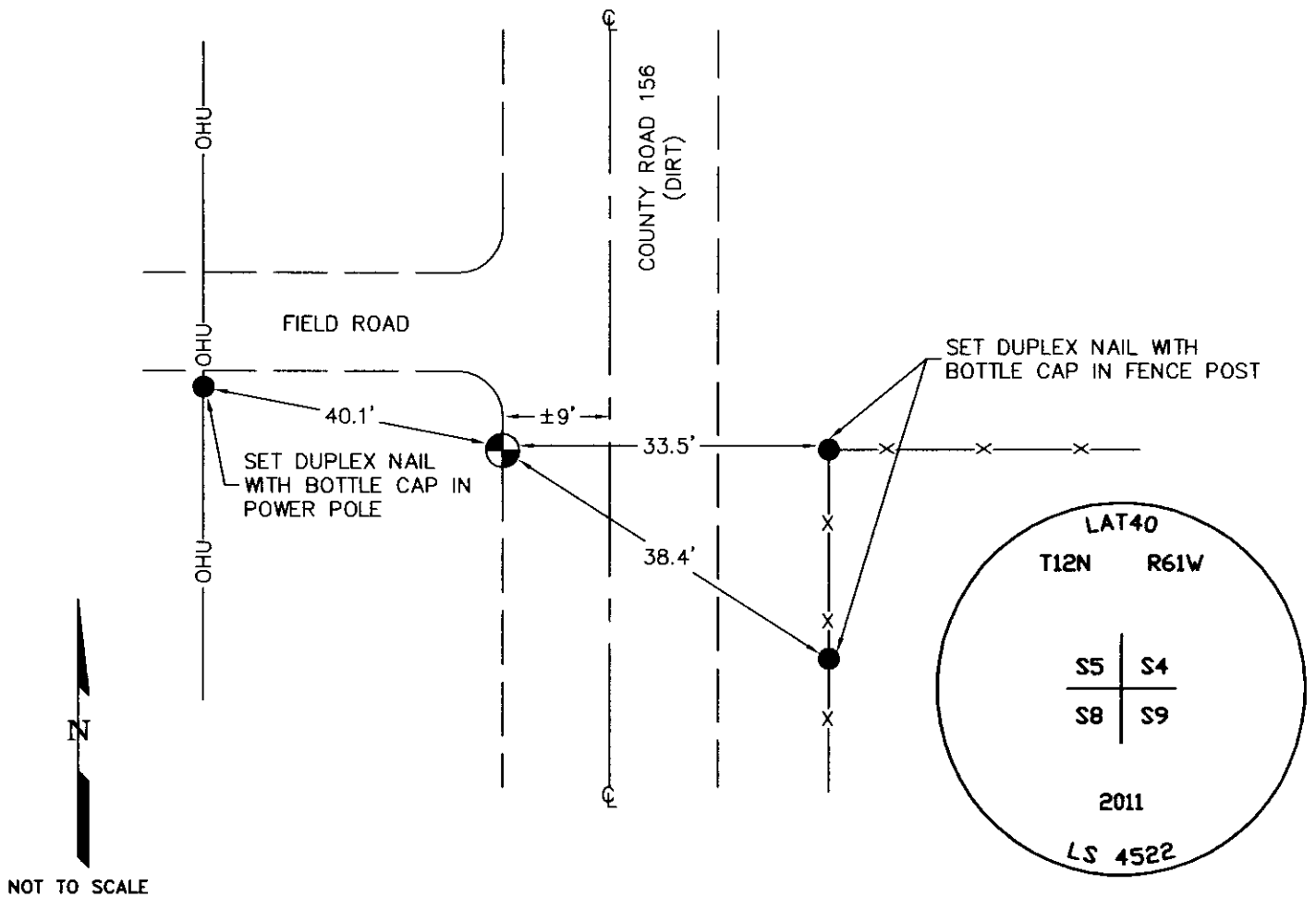
Record of original survey and citation of source of historical information (if corner is lost or obliterated). Description of corner monumentation evidence found and/or monument and accessories established to perpetuate the location of this corner. Sketch of relative location of monument, accessories, and reference points with course and distance to adjacent corner(s) (if determined in this survey). Method and rationale for reestablishment of lost or obliterated corner.

GLO RECORD: "SET A SAND STONE 18 X 12 X 3 10IN DEEP MARKED WITH 4 NOTCHES ON E. AND 5 NOTCHES ON S. FOR SEC COR TO SECT 4, 5, 8 & 9."

MONUMENT FOUND: NOTHING FOUND DURING FIELD SEARCH. (SEE REVERSE SIDE FOR PROCEDURES TO SET THIS CORNER)

MONUMENT SET: SET #6 REBAR WITH 2 1/2" ALUMINUM CAP STAMPED LS 4522 AND 2011 AS SHOWN BELOW, SET ±0.6' BELOW WEST EDGE OF DIRT ROAD SURFACE.

REFERENCES: FOUND AND OR SET REFERENCE TIES AS SHOWN IN SKETCH BELOW.

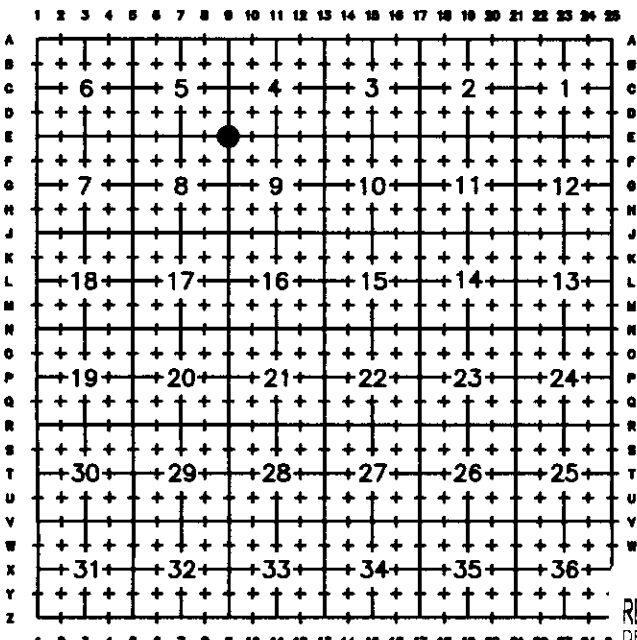


## Set Monument Inscription

Date of Field Work: 1/05/11

Office Reference: 2010105 (LAT40) LLC JN L10-22

### Cross Index Plat



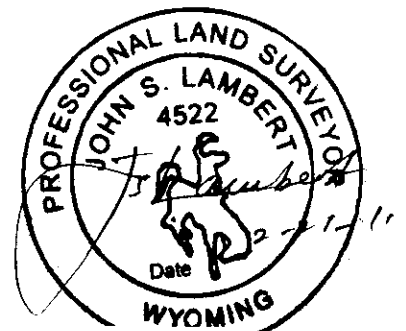
Firm/Agency, Address

Lat40, Inc.  
1635 Foxtrall Drive, Suite #325  
Loveland, Colorado 80537

Telephone Number: 970-776-3321

This corner record was prepared by me or under my direction and supervision.

SEAL & SIGNATURE



RECORDED 3/03/2011 AT 9:09 AM REC# 564093 BK# 2210 PG# 311  
 DEBRA K. LATHROP, CLERK OF LARAMIE COUNTY, WY PAGE 1 OF 2

Corner Name Section Corner Section 4, 5, 8 & 9, T 12 N, R 61 W, 6th P.M. Cross-Index No.: 8-9

Procedure to set this corner is as follows:

1 – Utilized field notes as performed by T.H.B. & M.D.M. dated 5/7/1951. Field Book 33, Pages 34 to 41. Work was performed for “L.E. Hockett Sec 12-T12N-61W, setting line between NW ¼ and SW ¼.”

2 – Utilized the field notes for “Road No. 27 – from Egbert to Colorado State Line.” Field Book 2, Page 20.

*These field books are County Road Books and can be viewed at the County Clerk & Records office.*

3 - From found 2” pipe (nka Point A) for corner to Sections 1,2,11,12 as described in said Book 33, I produce a line from this pipe westerly through a fence post (said fence post is on the east side of CR 156, fna County Road No. 27 – fence runs east and south only) 33 feet west to establish Point B. Point B to Point A measures 16004.3 feet as opposed to 16006.2 feet per said Book 33. Point B is now the corner for Sections 4,5,8,9 (E-9, T12N, R61W).

4 – From Point B towards Point A I go easterly one mile to intersect a north-south fence line. This intersect point, nka Point C, measures 5317.4 feet from Point B versus 5318 feet per said Book 33. Point C is now the corner for Sections 3,4,9,10 (E-13, T12N, R61W).

5 – For corner of Sections 2,3,10,11 (E-17, T12N, R61W) I held the measurement as described in said Book 33. From Point B towards Point A I measure 10767.3 feet. This corner lies at the centerline of a north-south road. Same as described in said Book 33.

6 – For corner to Sections 8,9,16,17 (J-9, T12N, R61W) I held said Point B, then south 80.3 chains (5299.8 feet) to the centerline of CR 156. The measurement of 80.3 chains is from said Book 2.

